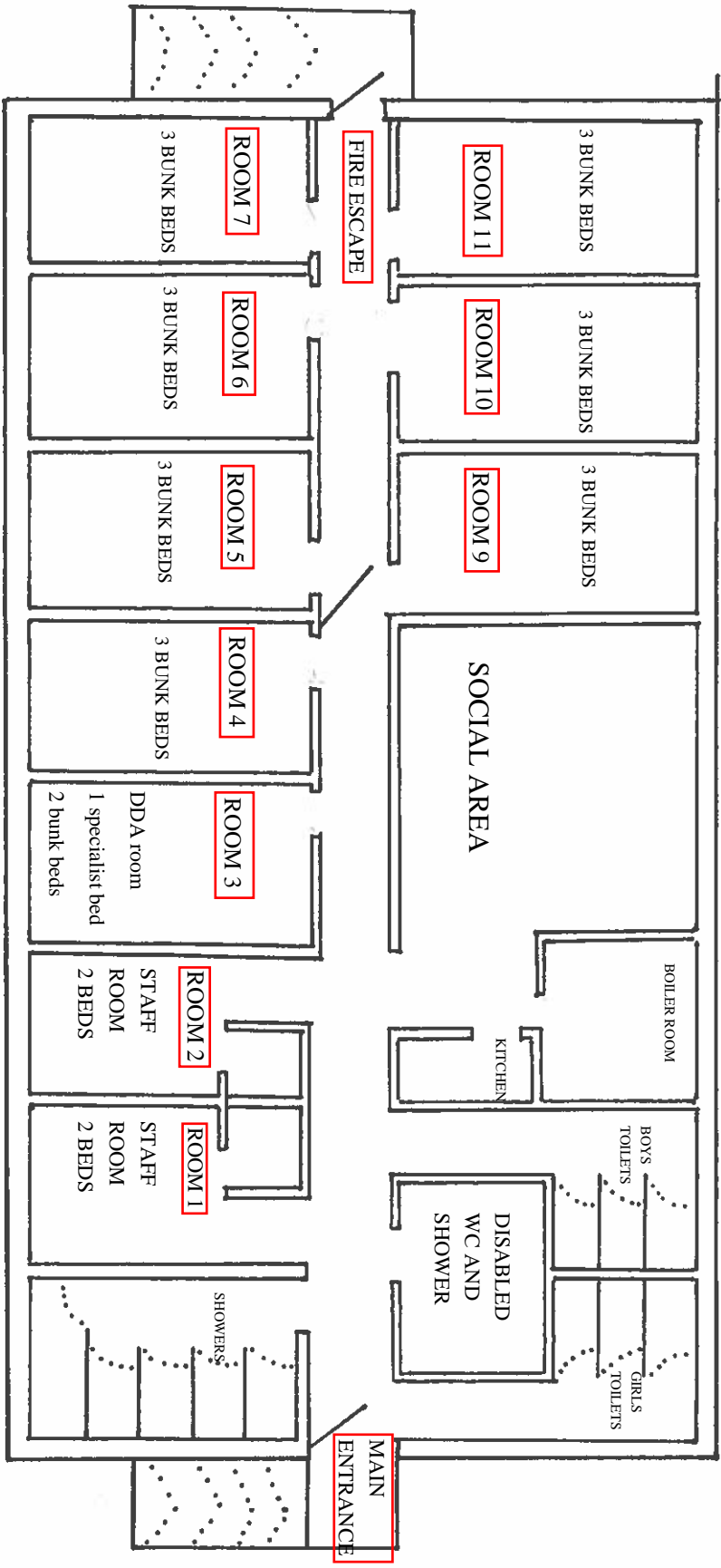


THE ANNEXE



The Annexe consists of:

Two staff rooms (1 and 2) each with two single beds and en suite toilet and shower facilities.

One DDA compliant room (3) with 5 beds (2x bunk beds + 1 specialist bed).

Seven room (4 - 11) of six beds (3 x bunk beds).

Please insert names in boxes on attached form and photo copy for fire plan.